

Printing Instructions

Teach...build...learn...renewable energy!

IMPORTANT:

Your template **must** be printed at the correct size, or parts of the project may not fit together. To ensure that your template prints at the correct size:

1. Determine the size of paper your template should be printed on - Letter or Legal (each template is labelled).
2. Choose **File > Print**
3. Choose **Properties**
4. A box similar to the one in Figure A will appear. Choose the size of paper you will be using for your template.
5. Under **Orientation**, make sure **Portrait** is checked.
6. Choose OK.
7. You will now see the original Print menu. Make sure 'Fit to Page' is **NOT** checked. (Figure B)
8. Choose the number of copies you wish to print.
9. Choose OK.
10. Check the scale on the printed template before proceeding with construction.

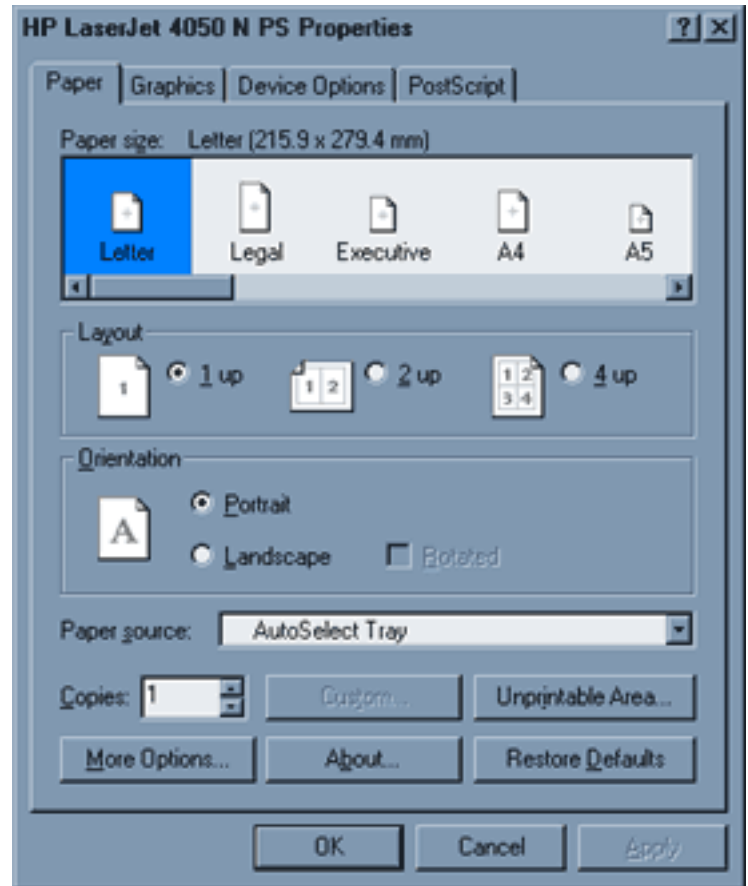


Fig. A

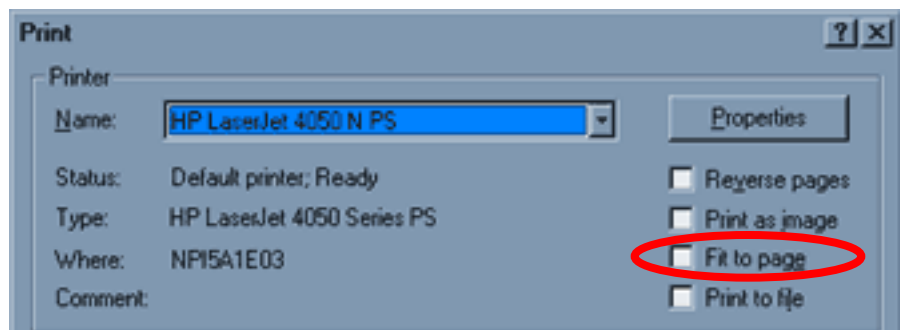


Fig. B